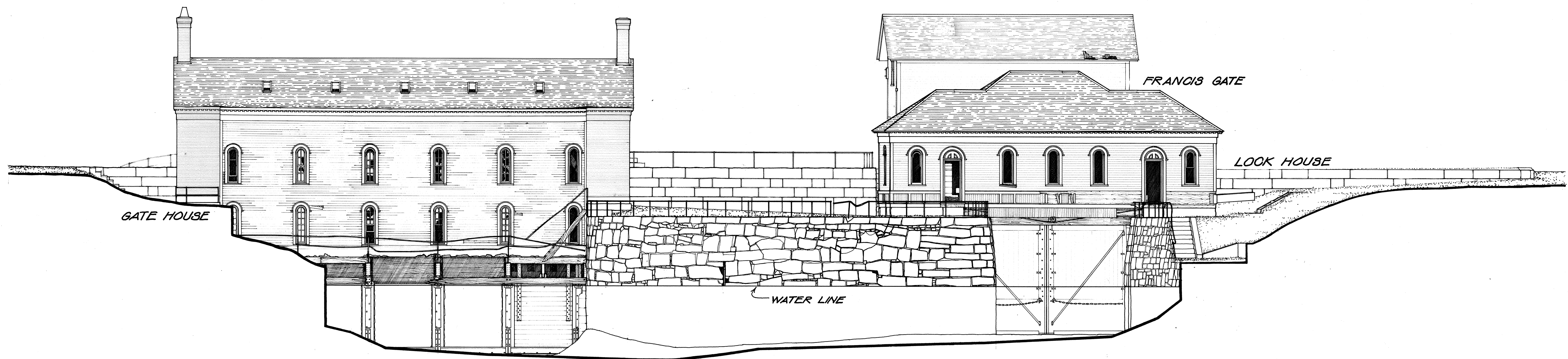


DRAWN BY: *LOUIS R. SQUIRZ* - 1974
 OFFICE OF ARCHAEOLOGY AND HISTORIC PRESERVATION
 SURVEY CANAL
 UNDER DIRECTION OF THE NATIONAL PARK SERVICE,
 UNITED STATES DEPARTMENT OF THE INTERIOR
 IF REPRODUCED, PLEASE CREDIT HISTORIC AMERICAN ENGINEERING RECORD, NATIONAL PARK SERVICE, NAME OF DRAFTER, DATE OF THE DRAWING

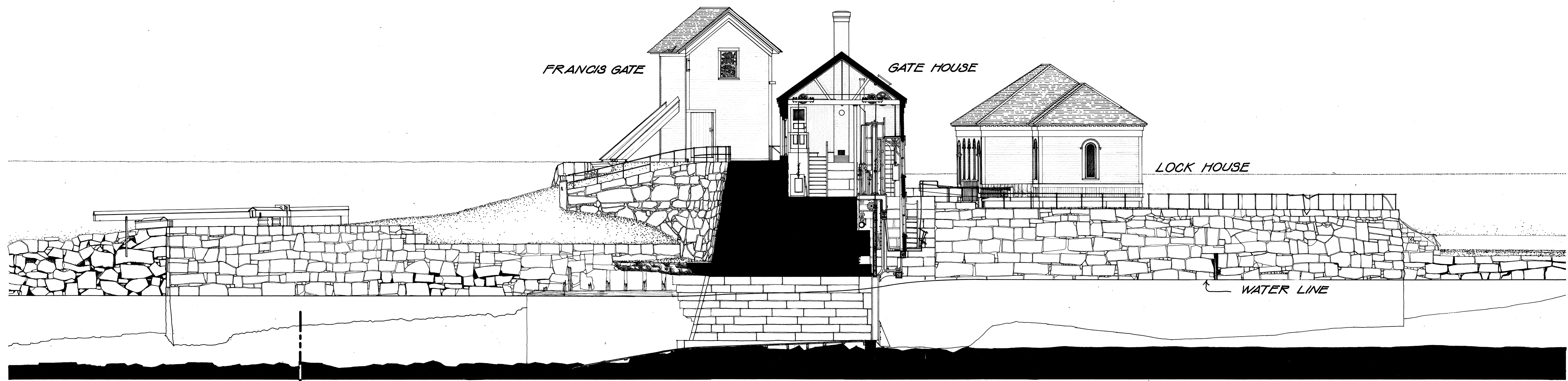
NAME AND LOCATION OF STRUCTURE
LOWELL CANAL SYSTEM GUARD LOCKS: FRANCIS GATE (1848-50), GATEHOUSE (1870), LOCK HOUSE (1881)
 ACROSS PAWTUCKET CANAL, 200 FEET NORTH OF BROADWAY
 MIDDLESEX COUNTY MASSACHUSETTS

RECORD NO.
 HAER MA-2A

HISTORIC AMERICAN
 ENGINEERING RECORD
 SHEET 1 OF 3 SHEETS



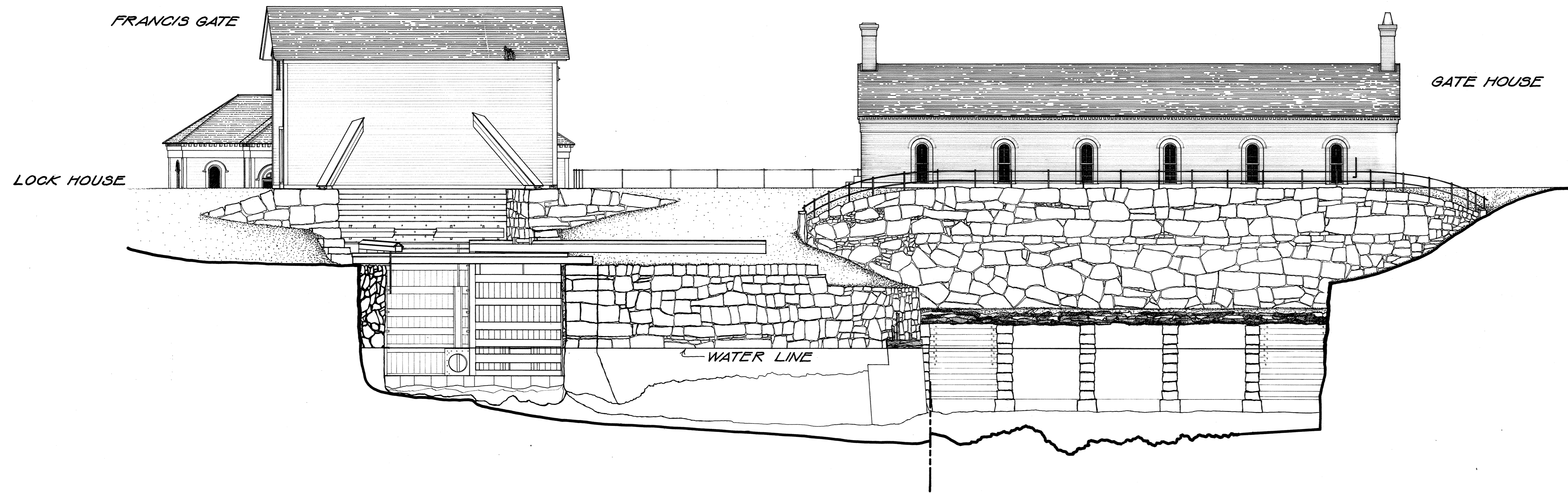
SITE SECTION LOOKING SOUTH



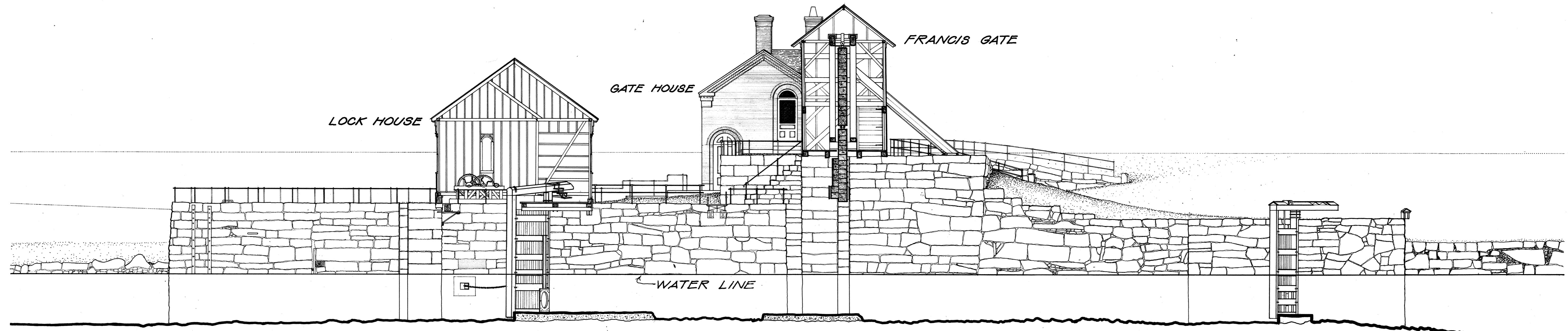
SITE SECTION LOOKING WEST

0 1 2 3 4 5 6 7 8 9 10 M.
 0 5 10 15 20 25 30 FT.
 SCALE: 1/8"=1'-0"

DRAWN BY: LESLIE VENTZSCH - 1974
 OFFICE OF ARCHEOLOGY AND HISTORIC PRESERVATION
 LOWELL CANAL SURVEY
 UNDER DIRECTION OF THE NATIONAL PARK SERVICE,
 UNITED STATES DEPARTMENT OF THE INTERIOR
 IF REPRODUCED, PLEASE CREDIT: HISTORIC AMERICAN ENGINEERING RECORD, NATIONAL PARK SERVICE, NAME OF Delineator, DATE OF THE DRAWING
 NAME AND LOCATION OF STRUCTURE: FRANCIS GATE (1848-50), GATEHOUSE (1870), LOCK HOUSE (1881)
 RECORD NO: HAER MA-2A
 HISTORIC AMERICAN ENGINEERING RECORD SHEET 2 OF 3 SHEETS
 MASSACHUSETTS
 LOWELL
 ACROSS PAWTUCKET CANAL 200 FEET NORTH OF BROADWAY MIDDLESEX COUNTY



SITE SECTION LOOKING NORTH



SITE SECTION LOOKING EAST

0 1 2 3 4 5 6 7 8 9 10 M.
 0 5 10 15 20 25 30 FT.
 SCALE: 1/8" = 1'-0"

DRAWN BY: MICHAEL F. CONNER · 1974
 OFFICE OF ARCHEOLOGY AND HISTORIC PRESERVATION
 LOWELL CANAL SURVEY
 UNDER DIRECTION OF THE NATIONAL PARK SERVICE,
 UNITED STATES DEPARTMENT OF THE INTERIOR
 IF REPRODUCED, PLEASE CREDIT: HISTORIC AMERICAN ENGINEERING RECORD, NATIONAL PARK SERVICE, NAME OF DELINEATOR, DATE OF THE DRAWING
 NAME AND LOCATION OF STRUCTURE: FRANCIS GATE (1848-50), GATEHOUSE (1870), LOCK HOUSE (1881)
 RECORD NO: HAE R MA-2A
 HISTORIC AMERICAN ENGINEERING RECORD SHEET 3 OF 3 SHEETS
 MASSACHUSETTS
 ACROSS PAWTUCKET CANAL 200 FEET NORTH OF BROADWAY
 MIDDLESEX COUNTY



HAER No. MA-2A-15

MICRO-MASTER

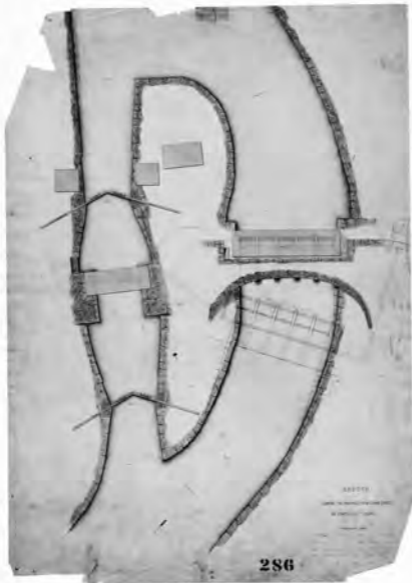
105 mm

MAKESPACE
with window or display area
available in England, France



JAN	FEB	MAR	APR	MAY	JUN
JUL	SEP	OCT	NOV	DEC	

8X



286

HAER MA-2A-7

MICRO-MASTER

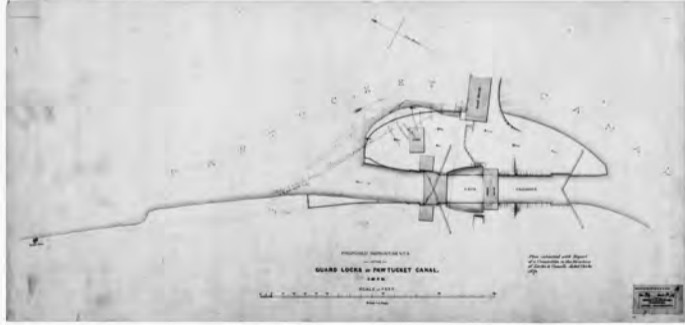
105 lines

MAKESPACE
INCORPORATING THE
ADVANCED INK-JET TECHNOLOGY



JAN FEB MAR APR MAY JUN
JUL SEP OCT NOV DEC

8 X



HAER MA-2A-6

MICRO-MASTER 100 mm
MAKESPACE
MULTIPLE NEW ENGLAND STORES



JAN FEB MAR APR MAY JUN
JUL SEP OCT NOV DEC

8X



HAER MA-2-2



HAER No. MA-2A-53

HAER No. MA-2A-16



HAER No. MA-2A-27



HAER No MA-2A-20



Pawtucket Canal: Guard Locks
Lowell, Massachusetts
Middlesex County

HAER No. MA-2A

HAER
MASS,
9-LOW,
9A-

REDUCED COPIES OF MEASURED DRAWINGS
PHOTOGRAPHS
WRITTEN HISTORICAL AND DESCRIPTIVE DATA

Historic American Engineering Record
National Park Service
Department of the Interior
Washington, D.C. 20240

HAER
MASS,
9-LOW,
9A-

HISTORIC AMERICAN ENGINEERING RECORD

PAWTUCKET CANAL: GUARD LOCKS

HAER MA-2A

DATE: 1832-1900, in various stages

LOCATION: Across the Pawtucket Canal,
Lowell, Massachusetts

DESIGNED BY: Unknown

OWNER: Proprietors of Locks and Canals,
Lowell, Massachusetts

SIGNIFICANCE: The Guard Locks were the first set of locks
constructed in the Lowell System which are still in
existence. They have, however, been altered and added
to since first put into use. The Guard Locks complex
now includes not only the locks, but also a sluice
gatehouse dating from 1870, a navigation lock
gatehouse (1881), and the Great (or Francis) Gate, a
portcullis-type gate constructed in 1848-50 to keep
flood waters from entering the canal system.
Researchers are referred to HAER No. MA-1, Lowell
Canal System for further information.

TRANSMITTED BY: Monica E. Hawley, Historian, 1983

HISTORIC AMERICAN ENGINEERING RECORD

INDEX TO PHOTOGRAPHS

Pawtucket Canal: Guard Locks
Lowell, Massachusetts
Middlesex County

- MA-2A-1 Photocopy of a drawing (original in the Collection of the PL&C, Shelf 117, Drawing 341) PLAN AND ELEVATION OF PIPEING (sic) TO RAISE AND LOWER GUARD LOCKS HYDRAULIC GATES, FEBRUARY, 1947
- MA-2A-2 Photocopy of a drawing (original in the Collection of the PL&C, Shelf 160, Drawing 4) PLAN OF SLUICES AT OLD GUARD LOCKS, FEBRUARY, 1902
- MA-2A-3 Photocopy of a drawing (original in the Collection of the PL&C, Shelf PH-20, Drawing 6) GUARD SLUICES OF PAWTUCKET CANAL AS RECONSTRUCTED IN 1870, 1870 (bottom half)
- MA-2A-4 Photocopy of a drawing (original in the Collection of the PL&C, Shelf PH-20, Drawing 6) GUARD SLUICES OF PAWTUCKET CANAL AS RECONSTRUCTED IN 1870, 1870 (top half)
- MA-2A-5 Photocopy of a drawing (original in the Collection of the PL&C, Shelf PH-20, Drawing 2) CYLINDER FOR HYDRAULIC LIFTS AT THE GUARD GATES OF PAWTUCKET CANAL, APRIL 19, 1870
- MA-2A-6 Photocopy of a drawing (original in the Collection of the PL&C, Shelf PH-20, Drawing 76-A) PROPOSED IMPROVEMENTS AT THE GUARD LOCKS OF THE PAWTUCKET CANAL, APRIL 19, 1870
- MA-2A-7 Photocopy of a drawing (original in the Collection of the PL&C, Shelf 117, Drawing 286) SKETCH SHOWING THE PROPOSED NEW GUARD GATES ON THE PAWTUCKET CANAL, FEBRUARY 1856--PLAN. (Pencil note: "Laid before meeting of Directors of Locks and Canals, March 13, 1856, no vote but it [was] not considered expedient to go [on with] the rebuilding at present.")
- MA-2A-8 Photocopy of a drawing (original in the Collection of the PL&C, Shelf 117, Drawing 290) SHEERS FOR HOLDING UP PAWTUCKET GUARD GATES, JULY 24, 1850
- MA-2A-9 Photocopy of a drawing (original in the Collection of the PL&C, Shelf 117, Drawing 282) GUARD LOCKS, PAWTUCKET CANAL OCTOBER 20, 1846 (Site section and plan)

- MA-2A-10 Photocopy of a drawing (original in the Collection of the PL&C, Shelf 117, Drawing 291) GATE FOR PAWTUCKET GUARD LOCKS, JULY 16, 1850
- MA-2A-11 Photocopy of a drawing (original in the Collection of the PL&C, Shelf 117, Drawing 283) GUARD LOCKS, PAWTUCKET CANAL OCTOBER 15, 1846 (Site section and plan)
- MA-2A-12 Photocopy of a drawing (original in the Collection of the PL&C, Shelf 115, Drawing 83)--ca. 1832-1848--SITE SECTION OF THE GUARD LOCKS SHOWING ORIGINAL GATE HOUSE & LOCK KEEPER'S HOUSE
- MA-2A-13 Photocopy of a drawing (original in the Collection of the PL&C, Shelf 106, Drawing 599, now held at the Lowell Technological Institute, Lowell, MA) A PLAN OF THE LAND ON THE SOUTH SIDE OF THE PAWTUCKET CANAL BELONGING TO THE MERRIMACK MANUFACTURING COMPANY, JANUARY 1824
- MA-2A-14 Photocopy of a drawing (original in the Collection of the PL&C, Shelf 106, Drawing 600, now held at the Lowell Technological Institute, Lowell, MA) A PLAN OF THE LAND ON THE SOUTH SIDE OF THE PAWTUCKET CANAL BELONGING TO THE MERRIMACK MANUFACTURING COMPANY, JANUARY, 1824
- MA-2A-15 GUARD LOCKS VIEWED FROM THE NORTHWEST BANK: SHOWS UPSTREAM SIDE. GATEHOUSE ON THE LEFT, ISLAND IN THE CENTER, AND LOCK HOUSE ON THE RIGHT Jack Boucher, Photographer 1976
- MA-2A-16 GENERAL VIEW OF LOCK GATES WITH GREAT GATE (FRANCIS GATE) IN BACKGROUND Jack Boucher, Photographer 1976
- MA-2A-17 LOCK GATES VIEWED FROM DOWNSTREAM SIDE WITH GREAT GATE (FRANCIS GATE) IN BACKGROUND Jack Boucher, Photographer 1976
- MA-2A-18 GREAT GATE (FRANCIS GATE) WITH COVERING HOUSE AND BRACES ABOVE Jack Boucher, Photographer 1976
- MA-2A-19 HOUSE COVERING GREAT GATE AT THE GUARD LOCKS SHOWING DIAGONAL BRACES FOR TIMBER FRAME SUPPORTING THE GATE Jack Boucher, Photographer 1976
- MA-2A-20 GREAT GATE (FRANCIS GATE) WITH COVERING HOUSE AND BRACES ABOVE Jack Boucher, Photographer 1976
- MA-2A-21 GREAT GATE (FRANCIS GATE) WITH COVERING HOUSE AND BRACES ABOVE, SHOWING SLOT FORMED IN THE LOCK CHAMBER FOR THE GATE Jack Boucher, Photographer 1976

- MA-2A-22 GREAT GATE VIEWED FROM UPSTREAM (NORTH) SIDE SHOWING THE
SLOT FORMED IN THE LOCK CHAMBER FOR THE GATE
Jack Boucher, Photographer 1976
- MA-2A-23 GREAT GATE FROM UPSTREAM SIDE
Jack Boucher, Photographer 1976
- MA-2A-24 GREAT GATE (FRANCIS GATE) Jack Boucher, Photographer 1976
- MA-2A-25 GUARD LOCKS VIEWED FROM THE SOUTH SHOWING DOWNSTREAM SIDE:
GREAT GATE ON LEFT, GATEHOUSE ON RIGHT
Jack Boucher, Photographer 1976
- MA-2A-26 GUARD LOCKS VIEWED FROM THE SOUTH, WITH GREAT GATE AND LOCK
GATES ON THE LEFT, GATE HOUSE ON THE RIGHT
Jack Boucher, Photographer 1976
- MA-2A-27 ONE OF THE LOWER LOCK GATES AT THE GUARD LOCKS VIEWED FROM
THE WEST BANK LOOKING EAST Jack Boucher, Photographer 1976
- MA-2A-28 GUARD LOCKS GATE HOUSE AND OUTLET SERVICES VIEWED FROM THE
DOWNSTREAM (SOUTH) SIDE Jack Boucher, Photographer 1976
- MA-2A-29 SERVICE OUTLETS OF GUARD LOCK GATE HOUSE, CURRENT RUNS TO
RIGHT FORMING THE MAIN FLOW OF THE PAWTUCKET CANAL
Jack Boucher, Photographer 1976
- MA-2A-30 INSCRIPTION ON THE GUARD LOCKS GATE HOUSE, EAST GABLE END
Jack Boucher, Photographer 1976
- MA-2A-31 GUARD LOCKS VIEWED FROM THE NORTHWEST BANK SHOWING UPSTREAM
SIDE: GATE HOUSE AT LEFT CENTER, POINT OF ISLAND IN CENTER,
AND LOCK HOUSE ON RIGHT Jack Boucher, Photographer 1976
- MA-2A-32 GENERAL VIEW FROM THE SOUTH SHOWING DOWNSTREAM SIDE;
GREAT GATE AND DOWNSTREAM LOCK GATES AT LEFT CENTER
Jack Boucher, Photographer 1976
- MA-2A_33 GUARD LOCKS LOCK HOUSE VIEWED FROM THE SOUTH
Jack Boucher, Photographer 1976
- MA-2A-34 GUARD LOCKS LOCK HOUSE VIEWED FROM THE EAST
Jack Boucher, Photographer 1976
- MA-2A-35 INTERIOR VIEW OF THE GUARD LOCKS LOCK HOUSE: CLOSED LOCK
GATES AND TWO SETS OF MACHINERY TO ASSIST IN OPERATING
THEM. VIEW FROM THE EAST END OF THE BUILDING LOOKING WEST
Jack Boucher, Photographer 1976

- MA-2A-36 WINDLASS ON THE EASTERN OF THE TWO DOWNSTREAM LOCK GATES AT
THE GUARD LOCKS, USED TO OPEN OR CLOSE A VALVE
Jack Boucher, Photographer 1976
- MA-2A-37 DETAIL OF MA-2A-36 Jack Boucher, Photographer 1976
- MA-2A-38 CHAIN AND WINDLASS IN GUARD LOCKS LOCK HOUSE. EASTERN OF
TWO SETS OF MACHINERY USED TO HELP OPEN UPSTREAM LOCK GATES
Jack Boucher, Photographer 1976
- MA-2A-39 DETAIL OF MA-2A-38 Jack Boucher, Photographer 1976
- MA-2A-40 DATE OF THE GREAT FLOOD AND HIGH WATER MARK CUT INTO THE
GRANITE WALL TO THE WEST OF THE GREAT GATE ON THE ORDER OF
J.B. FRANCIS, CHIEF ENGINEER
Jack Boucher, Photographer 1976